

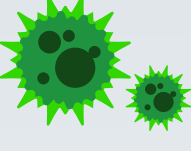


Good housekeeping, sanitation, and proper disposal processes help reduce pest infestation in your premises.

TOP PATHOGENS THAT CAUSE FOODBORNE ILLNESSES WORLDWIDE

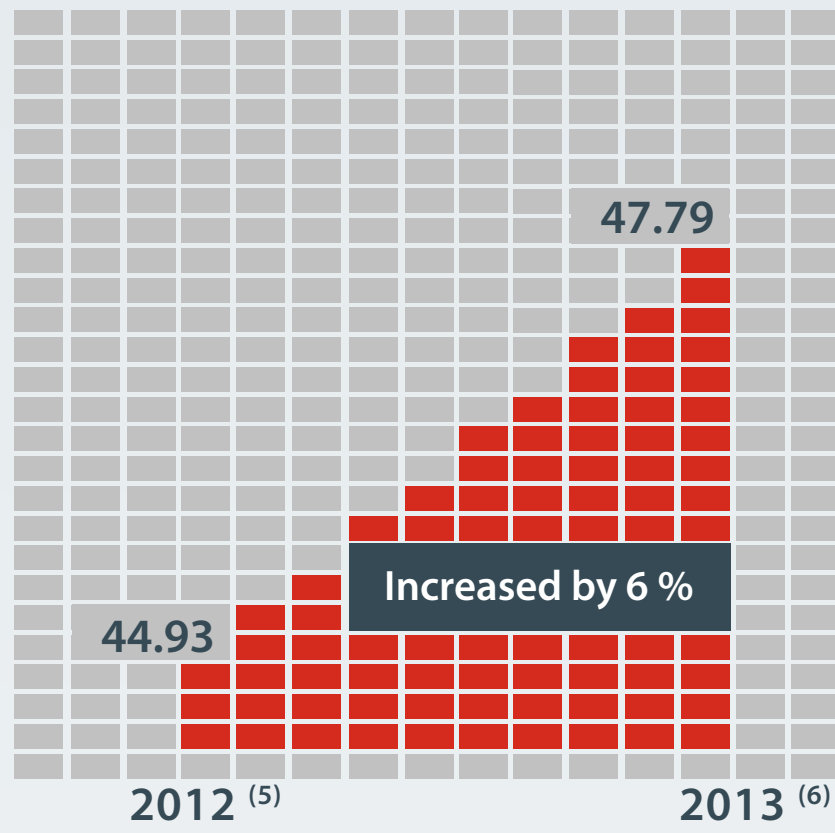
76 million illnesses, **325,000** hospitalisation cases and **5,000** deaths related to food contamination have been reported worldwide from 1999 to 2010 ⁽¹⁾

<p>US\$ 3.6 billion = RM 12.2 billion</p>	<p>Salmonella</p> 	<p>Common cause of hospitalisation and even death Health symptoms: diarrhoea, vomiting and fever Incubation period: 1 to 3 days ⁽²⁾</p>
<p>US\$ 2.8 billion = RM 9.4 billion</p>	<p>Listeria</p> 	<p>Primary cause of miscarriage and meningitis Health symptoms: fever, headache, diarrhoea and vomiting Incubation period: 2 to 60 days ⁽³⁾</p>
<p>US\$ 2.5 billion = RM 8.5 billion</p>	<p>Norovirus</p> 	<p>Common cause of gastroenteritis Health symptoms: vomiting, diarrhoea, cramps and mild fever Incubation period: 1 to 2 days ⁽⁴⁾</p>

Economic Cost Annually ⁽¹⁾

FOOD POISONING CASES IN MALAYSIA

Incidence Rate (by 100,000 population)

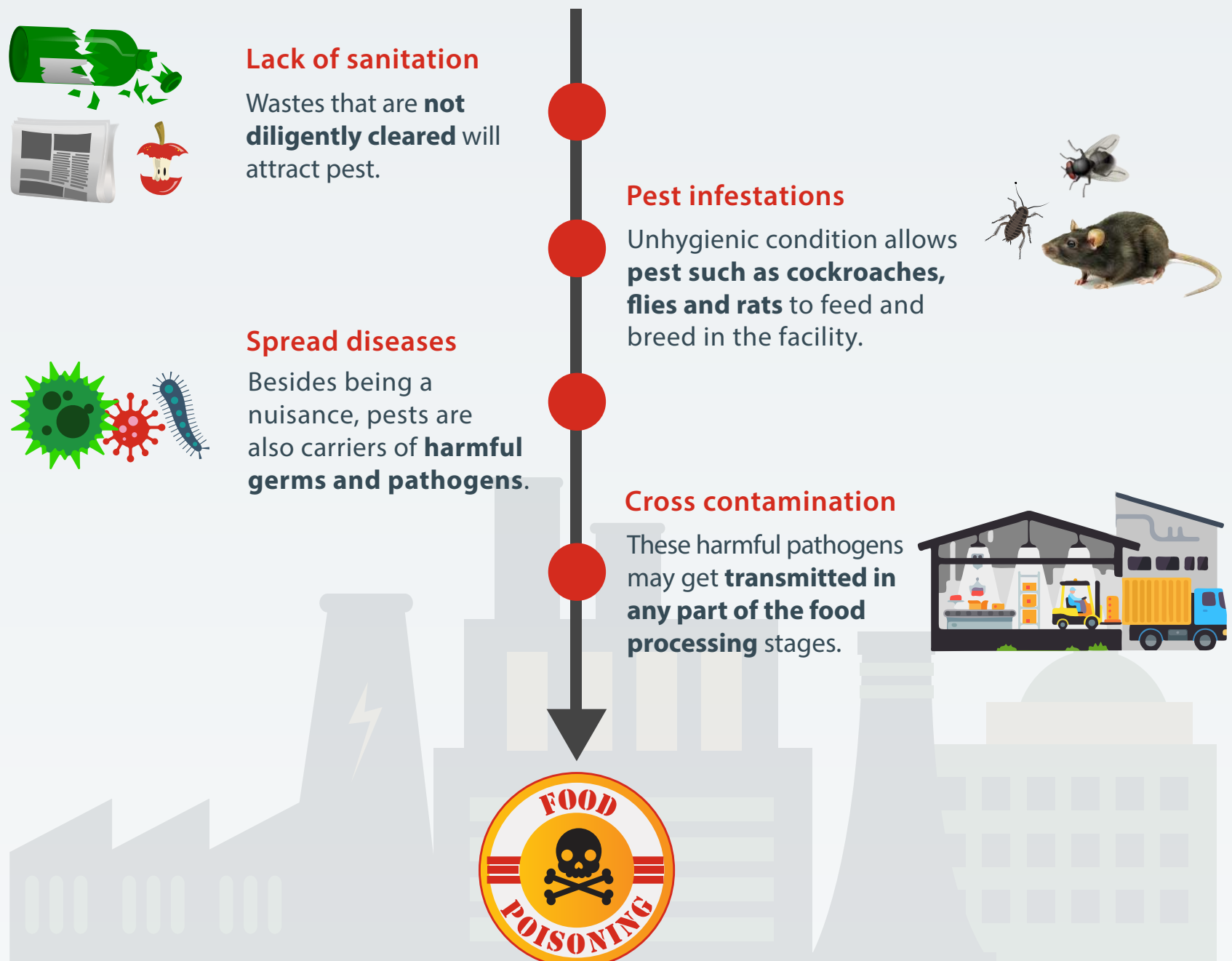


12,122 food poisoning cases were reported nationwide from January to October 2014 ⁽⁷⁾

March 2014 - **Salmonella** bacteria took the life of a 5 year old boy at Kuala Terengganu ⁽⁸⁾

March 2014 - A **RM51,781** fine was given to a restaurant for serving contaminated food ⁽⁹⁾

COMMON FACTORS LEADING TO FOOD CONTAMINATION



SANITATION PRACTICES AS PART OF RENTOKIL INTEGRATED PEST MANAGEMENT (IPM) ⁽¹⁰⁾

Executing effective sanitation plan is an essential part of IPM to eliminate pest breeding and harbourage areas both inside and outside of the premises.

Legends

- Common pest found
- Sanitation practices

- Drain & Waste Area**
 - Ideal breeding ground for **flies & cockroaches**
 - Scrub and clean regularly to remove waste build-ups
- Inner Roof**
 - Trapped food waste attract **cockroaches & rats**
 - Conduct routine maintenance to remove food waste
- Plant Surroundings**
 - Stagnant water attracts pest including **ants** to enter the plant
 - Clean empty containers to prevent catching water
- Warehouse**
 - Ideal environment for **cockroaches** to breed
 - Keep the area clean & dry
 - Place curtain strips at all doorways to deter bird & flies
- Production Area**
 - Harbourage area for **rats, cockroaches & ants**
 - Empty trash containers frequently
 - Clean machineries and equipment to eliminate accumulated food soils